

Global Structured Products

December 2005



Broderick CDO 1 Ltd.

THE OFFERING:

\$999.5 million Collateralized Debt Obligation ("CDO") Notes and Preferred Shares issued by Broderick CDO 1 Ltd.

**COLLATERAL MANAGER:**

Seneca Capital Management LLC

	CLASS A-1V NOTES ⁽¹⁾⁽²⁾	CLASS A-1NVA NOTES ⁽¹⁾⁽²⁾	CLASS A-1NVB NOTES ⁽¹⁾⁽²⁾⁽⁴⁾	CLASS A-2 NOTES ⁽¹⁾⁽²⁾⁽⁶⁾	CLASS B NOTES ⁽¹⁾⁽²⁾	CLASS C NOTES ⁽¹⁾⁽²⁾	PREFERRED SHARES ⁽¹⁾⁽²⁾
Principal	\$250,000	\$354,750,000	\$485,000,000	\$85,000,000	\$43,000,000	\$23,000,000	\$8,500,000
Percentage	0.03%	35.5%	48.5%	8.5%	4.3%	2.3%	0.9%
Coupon Type	Floating	Floating	Floating	Floating	Floating	Fixed	Residual
Coupon/Spread	L+27	L+27	L+27	N/A	L+58	7.665%	Residual
Rating	Aaa/AAA/AAA	Aaa/AAA/AAA	Aaa/AAA/AAA	Aaa/AAA/AAA	Aa2/AA/AA	Baa2/BBB/BBB	N/R
Average Life ⁽³⁾	5.9 yrs	5.9 yrs	5.9 yrs	6.1 yrs	6.1 yrs	6.1 yrs	N/A
Rating Agency	Moody's/S&P/Fitch	Moody's/S&P/Fitch	Moody's/S&P/Fitch	Moody's/S&P/Fitch	Moody's/S&P/Fitch	Moody's/S&P/Fitch	N/A
Stated Maturity	January 3, 2043	January 3, 2043	January 3, 2043	January 3, 2043	January 3, 2043	January 3, 2043	January 3, 2043
Denomination	\$250,000 minimum \$1,000 increments	\$250,000 minimum \$1,000 increments	\$250,000 minimum \$1,000 increments	\$250,000 minimum \$1,000 increments	\$250,000 minimum \$1,000 increments	\$250,000 minimum \$1,000 increments	\$250,000 minimum ⁽⁵⁾ \$1,000 increments

(1) The transaction is at a structuring phase, the actual characteristics of the offered securities may differ from those presented herein. Definitions and other terms will be fully described in the offering circular.

(2) Payments on the Notes and Preferred Shares will be made quarterly.

(3) Based on a 8 year auction call, WAS of 0.65%, WAC of 5.45%, and Forward LIBOR

(4) The Class A-1NVB Notes will not be fully funded at Closing

(5) With some limited exceptions

(6) Not Offered.

STRUCTURE

Issuer:	Broderick CDO 1 Ltd.
Collateral Manager:	Seneca Capital Management
Closing Date:	December 13, 2005
Coupon Payment Dates:	January 3, April 3, July 3, October 3, beginning April 3, 2006
Ramp-Up Period:	120 days. At least 85% of the Collateral Portfolio is expected to be purchased or identified at closing.
Non-Call Period:	Ending January 3, 2011 (thereafter, all of the Notes and Preferred Shares may be called by a majority vote of the Preferred Shares)
Substitution Period:	Ending January 3, 2008; manager may substitute up to 15% of the collateral to improve the portfolio.

OC Test Cures: In the event that the Class A/B O/C Test is breached in the interest waterfall, interest will be used first to pay down the Class A-1 Notes, followed by the Class A-2 Notes and then the Class B Notes. In the event that the Class A/B O/C Test is breached in the principal waterfall, principal will be used first to pay down the Class A-1 Notes, followed by the Class A-2 Notes and then the Class B Notes. In the event that the Class C O/C Test is breached in the interest waterfall, interest will be used to pay down the Class C Notes. In the event that the Class C O/C Test is breached in the principal waterfall, principal will be used to pay down the Notes on a sequential basis beginning with the most senior outstanding class of Notes.

Auction Call January 3, 2014 – 8% Preferred Share IRR Hurdle; January 3, 2016 – 6% Preferred Share IRR Hurdle; January 3, 2018 – 4% Preferred Share IRR Hurdle

Pro Rata Paydown Principal amortization will be used to pay down the Notes on a pro rata basis until either 50% of the collateral has amortized or the Sequential Pay Test is triggered. If any coverage test is not in compliance, it must be cured before pro rata paydowns can continue.

COVERAGE TESTS

	Test Level ⁽¹⁾	Initial Level ⁽²⁾
Class A/B	102.0%	103.3%
Class C	100.4%	100.9%
Sequential Pay Test	106.4%	108.1%

(1) Test Level represents the levels that must be passed in order not to cause accelerated redemption of the Notes.

(2) Initial Level represents expected characteristics of target portfolio.

FEES AND EXPENSES

Senior Management Fee:	8.0 bps per annum
Subordinate Management Fee:	2.0 bps per annum
Closing Fees and Expenses ⁽¹⁾	***

(1) On the Closing Date, the Co-Issuers will use a portion of the gross proceeds from the offering to pay various fees and expenses, including expenses, fees and commissions incurred in connection with the acquisition of the Collateral, structuring and placement agency fees payable to Merrill Lynch, and legal, accounting, rating agency and other fees. Closing fees and expenses reduce the amount of the gross proceeds of the offering available to purchase Collateral and, therefore, the return to purchasers of the Offered Securities. For information about the amount of such fees and expenses, please review the final Offering Circular before investing.

COLLATERAL CHARACTERISTICS

• Weighted Average Fixed Coupon:	5.45%	• Maximum CDOs: ⁽³⁾	20%
• Weighted Average Floating Spread:	0.65%	• Maximum Weighted Average Life:	7.0 Years
• Maximum Weighted Average Rating: ⁽¹⁾	55 (Aa3/A1)	• Maximum Single Issuer Concentration:	1.0% ⁽²⁾
• Maximum Correlation: ⁽¹⁾	<=23%	• Maximum Synthetic Securities:	20.0%
• Minimum Initial Rating at Purchase:	A3	• Maximum Obligations Rated Below "Aaa":	73.0%
• Maximum Single Servicer Concentration:	7.5% ⁽²⁾	• Maximum Fixed Rate Obligations:	25.0%
• Maximum Obligations rated "A1", "A2", "A3":	30.0%	• Maximum Corporate Bespokes:	2.0%

(1) Based on a WARF-Correlation matrix which is described in the Offering Circular

(2) With some exceptions up to 2.0%

(3) Minimum CDO rating at initial purchase is A2

Global Structured Products	CDO Marketing/Global Structured Products	Global Private Clients	ABS Trading and Syndicate
Institution Clients			
Christopher Ricciardi (212) 449-9638	US: Doug Mallach (212) 449-6190	Marie Walsh (212) 449-5383	Scott Soltas (212) 449-3659
Harin De Silva (212) 449-9359	Canada: Barry Dennis (212) 449-0394	Marco Pavoncelli +44-207-996-3743	Colin Sheen (212) 449-3659
Cecilia Pan (212) 449-0867	Europe: Bill Berry 44-207-995-4678	Institutional Advisory Division	Andrew Phelps (212) 449-3659
Julie Cutler (212) 449-0196	Asia: Taro Masuyama 81-3-3213-7473	Mike Foggia (212) 449-6190	
Josh Polinelli (212) 449-8231			
Julie Kesterman (212) 449-3054			

This term sheet may only be distributed along with the Confidential Discussion Materials to pre-qualified Merrill Lynch clients who are Qualified Purchasers within the meaning of Investment Company Act of 1940.

Global Structured Products

Why Invest in Structured Finance Securities?

Structured Finance Securities (including ABS, RMBS and CMBS) and CDOs have historically exhibited lower default rates, higher recovery upon default and better rating stability than comparably rated corporate bonds. Consequently, CDOs consisting of Structured Finance Securities and CDOs have outperformed other CDO types.⁽¹⁾

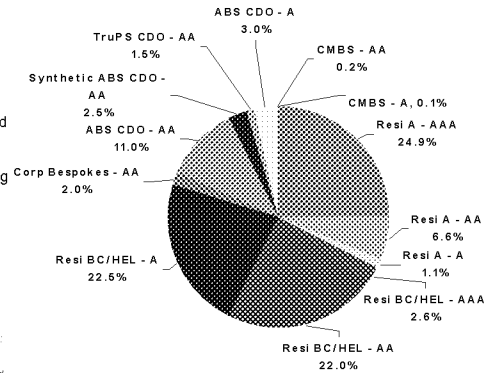
- According to a recent Moody's study, the long-term historical average (1983-2004) of unchanged ratings of Structured Finance Securities and CDOs was 92.3%, which compares favorably to the 77.6% average of unchanged ratings of corporate bonds for the same period.⁽¹⁾

A Moody's study on recovery rates of Structured Finance Securities (including RMBS and HEL) has concluded the following⁽²⁾⁽³⁾:

- Aa and A rated Structured Finance Securities have historically had an average recovery rate of 72% and 93% for bonds that have not matured⁽⁴⁾.
- Aaa rated Structured Finance Securities have historically had an average recovery rate of 98% for bonds that have not matured⁽⁴⁾.

- "Structured Finance Rating Transitions: 1983-2004", Moody's Investors Service, February 2005
- Source: Moody's Investors Service, "Default & Loss Rates of Structured Finance Securities: 1993-2004", July 2005
- Data in all three cases is based on a limited number of defaults: Moody's records the number of defaulted RMBS/HEL Securities that originated as Aaa, Aa, and A as 11, 29, and 16, respectively.
- Data for recovery rates are updated through January 2005 with defaults identified as of December 31, 2004 and uncured securities were included in the study. Loss severity rates for all defaulted securities, including curea ones, would lead to lower estimates.

REPRESENTATIVE PORTFOLIO*



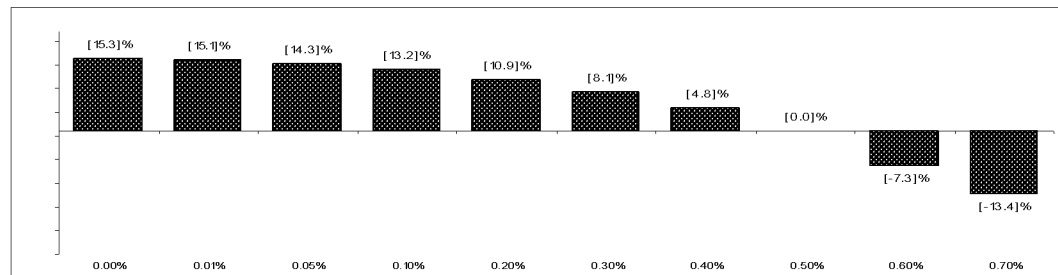
* For illustrative purposes only. Subject to change.

About Seneca Capital Management⁽¹⁾

- Seneca, an independently operated investment management firm founded in 1989, provides investment management services to pension funds, foundations, endowments, corporations, multi-employer private clients. Seneca's growth and success are attributable to its track record and client service.
- As of September 30, 2005:
 - Portfolios with \$13.6 billion in fixed income exposure
 - Portfolios with \$2.1 billion in equity exposure
- 36 investment professionals with an average of 17 years of investment experience

(1) Source: Seneca. As of November 2005

PROJECTED IRR ON PREFERRED SHARES*



*Recovery assumption: 75%. See Collateral Assumptions

*Based on an 8 year auction call

*Assumes a weighted average spread of 0.65% and a weighted average coupon of 5.45%.

BREAKEVEN DEFAULT RATES⁽¹⁾⁽²⁾⁽³⁾⁽⁴⁾

Class Description (Moody's/S&P/Fitch)	Based on a Break in Yield		Based on 0% Yield	
	Annual Default Rate	Cumulative Gross Defaults	Annual Default Rate	Cumulative Gross Defaults
Class A1 First Priority Senior Secured Floating Rate Delayed Draw Notes Aaa/AAA/AAA	8.4%	39.4%	36.3%	85.3%
Class A2 Second Priority Senior Secured Floating Rate Notes Aaa/AAA/AAA	4.1%	21.9%	7.1%	34.6%
Class B Third Priority Senior Secured Floating Rate Notes Aa2/Aa/AA	2.6%	14.8%	4.0%	21.4%
Class C Fourth Priority Subordinate Fixed Rate Notes Baa2/BBB/BBB	0.7%	4.3%	1.7%	10.2%

- Break in yield is the default rate at which the first dollar loss occurs, and 0% yield is the default rate at which the cashflows over the life of the bond equal the initial investment.
- Assumes no default lag, 75% recoveries with 12 month lag, 0.65% WAS, 5.45% WAC and forward LIBOR.
- Based on an auction call in 8 years.
- Definitions and other terms will be fully described in the Offering Circular

Future market and economic conditions are impossible to predict. Future market or economic conditions that materially differ from those on which the assumptions are based may have a negative impact on the performance of Breakeven CDO T-1A. For these and other reasons, there are limitations on the value of this or any hypothetical illustration.

THIS SUMMARY IS A SUMMARY OF THE "CONFIDENTIAL DISCUSSION MATERIAL - BRODERICK CDO 1 LTD." (THE "MATERIAL") AND SHOULD BE READ IN CONJUNCTION THEREWITH INCLUDING "TRANSACTION HIGHLIGHTS - STRUCTURING ASSUMPTIONS" THEREIN. THE MATERIAL OUTLINES CERTAIN CHARACTERISTICS OF A PROPOSED COLLATERALIZED DEBT OBLIGATION TRANSACTION ("CDO"). THE MATERIAL IS PREPARED SOLELY FOR PURPOSES OF DISCUSSION TO ASSIST PROSPECTIVE INVESTORS IN DETERMINING WHETHER THEY HAVE A PRELIMINARY INTEREST IN INVESTING IN A TRANSACTION WITH THE GENERAL CHARACTERISTICS DESCRIBED HEREIN. THIS TRANSACTION IS IN A STRUCTURING PHASE AND THERE MAY BE MATERIAL CHANGES TO THE STRUCTURE, TERMS AND ASSETS PRIOR TO THE OFFERING OF ANY SECURITIES (THE "SECURITIES"). NEITHER THE MATERIAL NOR THIS SUMMARY IS AN OFFER TO SELL, OR A SOLICITATION TO BUY, THE SECURITIES OR ANY OTHER INVESTMENT. ANY SUCH OFFERING OF THE SECURITIES WILL ONLY BE MADE PURSUANT TO A FINAL OFFERING CIRCULAR RELATING TO THE SECURITIES (THE "OFFERING CIRCULAR"), WHICH WILL CONTAIN MATERIAL INFORMATION NOT MATERIAL TO THE MATERIAL. PROSPECTIVE PURCHASERS ARE DIRECTED, IN THE EVENT OF ANY SUCH OFFERING, THE MATERIAL AND THIS SUMMARY WILL BE DEEMED SUPERCEDED, AMENDED AND SUPPLEMENTED IN THEIR ENTIRETY BY THE OFFERING CIRCULAR (INCLUDING ANY PRELIMINARY VERSION THEREOF). THIS SUMMARY IS CONFIDENTIAL AND PROPRIETARY TO MERRILL LYNCH, PIERCE, FENNER & SMITH, INCORPORATED AND ITS AFFILIATES COLLECTIVELY, "MERRILL LYNCH" AND, ACCORDINGLY, EXCEPT AS DESCRIBED BELOW, THE SUMMARY IS TO BE TREATED AS STRICTLY CONFIDENTIAL AND NOT DISCLOSED DIRECTLY OR INDIRECTLY TO ANY PARTY OTHER THAN THE RECIPIENT AND ITS ADVISERS OR USED FOR ANY PURPOSE OTHER THAN TO MAKE A PRELIMINARY ANALYSIS OF THE SECURITIES. NOTWITHSTANDING THE FOREGOING, RECIPIENTS OF THIS SUMMARY AND EACH EMPLOYEE, REPRESENTATIVE OR OTHER AGENT OF ANY SUCH RECIPIENT MAY DISCLOSE TO ANY AND ALL PERSONS, WITHOUT LIMITATION OF ANY KIND, THE U.S. FEDERAL INCOME TAX TREATMENT AND TAX STRUCTURE OF THIS TRANSACTION AND ALL MATERIALS OF ANY KIND, INCLUDING OPINIONS OR OTHER TAX ANALYSES, THAT ARE PROVIDED TO THE RECIPIENTS RELATING TO SUCH TAX TREATMENT AND TAX STRUCTURE. THIS AUTHORIZATION TO DISCLOSE SUCH TAX TREATMENT AND TAX STRUCTURE DOES NOT PERMIT DISCLOSURE OF INFORMATION IDENTIFYING THIS TRANSACTION, THE INVESTMENT ADVISER, COLLATERAL MANAGER OR ANY OTHER PARTY OR THE PRICING (EXCEPT TO THE EXTENT PRICING IS RELEVANT TO TAX STRUCTURE OR TAX TREATMENT) OF THIS TRANSACTION. NO PERSON HAS BEEN AUTHORIZED TO GIVE ANY INFORMATION OR MAKE ANY REPRESENTATIONS OTHER THAN THE INFORMATION CONTAINED IN THE MATERIAL, AS AMENDED AND SUPERCEDED BY THE INFORMATION CONTAINED IN THE OFFERING CIRCULAR RELATING TO THE EVENTUAL OFFERING, IF ANY, OF THE SECURITIES. THE SECURITIES DESCRIBED HEREIN, IF OFFERED, WILL NOT BE REGISTERED WITH THE U.S. SECURITIES AND EXCHANGE COMMISSION. THIS SUMMARY MAY NOT BE DISSEMINATED OTHER THAN (I) WITHIN THE UNITED STATES OF AMERICA, TO INVESTORS THAT ARE BOTH (A) "QUALIFIED INSTITUTIONAL BUYERS" (AS DEFINED IN RULE 144A UNDER THE U.S. SECURITIES ACT OF 1933, AS AMENDED (THE "SECURITIES ACT") OR (II) "ACCREDITED INVESTORS" WITHIN THE MEANING OF SECTION 501(A) UNDER THE SECURITIES ACT AND, IN EACH CASE, WHO ARE ALSO (B) "QUALIFIED PURCHASERS" WITHIN THE MEANING OF SECTION 3(c)(7) OF THE U.S. INVESTMENT COMPANY ACT OF 1940, AS AMENDED (THE "INVESTMENT COMPANY ACT") OR (I) "KNOWLEDGEABLE EMPLOYEES" WITH RESPECT TO THE ISSUER OF THE SECURITIES WITHIN THE MEANING OF RULE 3(c)(7) PROMULGATED UNDER THE INVESTMENT COMPANY ACT AND (2) OUTSIDE THE UNITED STATES OF AMERICA, TO NON-U.S. PERSONS IN OFF-SHORE TRANSACTIONS IN RELIANCE ON REGULATION S UNDER THE SECURITIES ACT. THE OFFER OR SALE OF THE SECURITIES MAY BE FURTHER RESTRICTED BY LAW AND THE RESTRICTIONS SET FORTH IN THE OFFERING CIRCULAR. POTENTIAL INVESTORS ARE REQUIRED TO INFORM THEMSELVES OF AND TO OBSERVE ANY LEGAL RESTRICTIONS ON THEIR INVOLVEMENT IN THE TRANSACTION. ADDITIONAL NET WORTH AND/OR SOPHISTICATION REQUIREMENTS MAY BE REQUIRED OF INDIVIDUAL NONU.S. PERSONS. APPLICATION WILL BE MADE TO LIST THE SECURITIES ON THE IRISH STOCK EXCHANGE LIMITED (IRISH STOCK EXCHANGE). THERE CAN BE NO ASSURANCE THAT LISTING ON THE IRISH STOCK EXCHANGE WILL BE GRANTED. PROSPECTIVE INVESTORS SHOULD NOT CONSTRUCT THIS SUMMARY, THE MATERIAL, THE OFFERING CIRCULAR OR ANY PRIOR OR SUBSEQUENT COMMUNICATION AS LEGAL, ACCOUNTING OR TAX ADVICE. CERTAIN INFORMATION IS PRESENTED IN SUMMARY FORM AND IS NOT COMPLETE. IN ADDITION, CERTAIN INFORMATION CONTAINED HEREIN HAS BEEN PROVIDED BY THIRD PARTIES AND HAS NOT BEEN INDEPENDENTLY VERIFIED BY MERRILL LYNCH AND MERRILL LYNCH MAKES NO REPRESENTATION OR WARRANTY, EXPRESS OR IMPLIED, AS TO THE ACCURACY OR THE COMPLETENESS OF SUCH INFORMATION. AN INVESTMENT IN THE SECURITIES PRESENTS SUBSTANTIAL RISKS AND INVESTORS SHOULD BE PREPARED TO SUFFER A LOSS OF THEIR ENTIRE INVESTMENT. PRIOR TO MAKING AN INVESTMENT DECISION, AN INVESTOR SHOULD CONDUCT SUCH INVESTIGATIONS AS SUCH INVESTOR DEEMS NECESSARY IN ORDER TO DETERMINE IF AN INVESTMENT IN THE SECURITIES OFFERED BY THE OFFERING CIRCULAR IS APPROPRIATE AND SUITABLE FOR SUCH INVESTOR AND SHOULD CONSULT SUCH INVESTORS OWN LEGAL, ACCOUNTING AND TAX ADVISERS IN ORDER TO DETERMINE THE CONSEQUENCES OF AN INVESTMENT IN SUCH SECURITIES AND TO MAKE AN INDEPENDENT EVALUATION OF SUCH INVESTMENT. WITH RESPECT TO INSTITUTIONAL CLIENTS, MERRILL LYNCH IS ACTING IN THE CAPACITY OF AN AGENCY IN LENGTH CONTRACTUAL COUNTERPARTY AND NOT IN THE CAPACITY OF A FINANCIAL ADVISOR OR FIDUCIARY FORWARD LOOKING STATEMENTS, ANY PROJECTIONS, FORECASTS AND ESTIMATES CONTAINED IN THIS SUMMARY ARE FORWARD LOOKING STATEMENTS AND ARE BASED UPON ASSUMPTIONS. PROJECTIONS ARE NECESSARILY SPECULATIVE IN NATURE, AND IT CAN BE EXPECTED THAT SOME OR ALL OF THE ASSUMPTIONS UNDERLYING THE PROJECTIONS WILL NOT MATERIALIZE OR WILL VARY SIGNIFICANTLY FROM ACTUAL RESULTS. ACCORDINGLY, THE PROJECTIONS ARE ONLY AN ESTIMATE. ACTUAL RESULTS WILL DIFFER AND MAY VARY SUBSTANTIALLY FROM THE PROJECTIONS SHOWN. IN ADDITION, CERTAIN ANALYSES ARE BASED ON MATHEMATICAL MODELS THAT USE HYPOTHETICAL INPUTS TO CALCULATE RESULTS. AS WITH ALL MODELS, RESULTS MAY VARY SIGNIFICANTLY DEPENDING UPON THE VALUES OF THE INPUTS USED. MODELS USED IN ANY ANALYSIS MAY BE PROPRIETARY, MAKING THE RESULTS DIFFICULT FOR ANY THIRD PARTY TO REPRODUCE. MOREOVER, HYPOTHETICAL PERFORMANCE ANALYSES WILL ADDRESS ONLY CERTAIN ASPECTS OF THE CHARACTERISTICS OF THE SECURITIES AND WILL NOT PROVIDE A COMPLETE ASSESSMENT OF THE RESULTS THAT MAY FOLLOW FROM ALL POSSIBLE CONTINGENCIES (INCLUDING DEFAULT, INTEREST RATE AND OTHER SCENARIOS) AND CERTAIN ECONOMIC FEATURES OF THE SECURITIES, INCLUDING CALL FEATURES AND CASH FLOW DIVERSION EVENTS). PROSPECTIVE INVESTORS SHOULD UNDERSTAND THE ASSUMPTIONS USED IN ANY ANALYSIS AND EVALUATE WHETHER THEY ARE APPROPRIATE FOR THEIR PURPOSES. PROSPECTIVE INVESTORS SHOULD FURTHER CONSIDER WHETHER THE BEHAVIOR OF THESE SECURITIES SHOULD BE TESTED BASED ON ASSUMPTIONS DIFFERENT FROM THOSE USED TO PREPARE THE ANALYSES. NOTE TO HISTORICAL DATA: ANY HISTORICAL INVESTMENT RESULTS OF ANY PERSON OR ENTITY DESCRIBED IN THIS SUMMARY ARE NOT INDICATIVE OF THE ISSUERS' FUTURE INVESTMENT RESULTS. SUCH RESULTS ARE INTENDED ONLY TO GIVE POTENTIAL INVESTORS INFORMATION CONCERNING THE GENERAL EXPERIENCE OF THE RELEVANT PERSON OR ENTITY AS AN ASSET MANAGER OR ADVISER AND IS NOT INTENDED AS A REPRESENTATION OR WARRANTY BY MERRILL LYNCH OR ANY OTHER PERSON OR ENTITY AS TO THE ACTUAL COMPOSITION OR PERFORMANCE OF ANY FUTURE INVESTMENTS THAT WOULD BE MADE BY THE ISSUER. THE NATURE OF, AND RISKS ASSOCIATED WITH, THE ISSUERS' FUTURE INVESTMENTS MAY DIFFER SUBSTANTIALLY FROM AND WILL BE SUBJECT TO CONSTRAINTS THAT WERE NOT APPLICABLE TO THOSE INVESTMENTS AND STRATEGIES UNDERTAKEN HISTORICALLY BY SUCH PERSONS AND ENTITIES. THERE CAN BE NO ASSURANCE AS TO THE ACCURACY OR THE COMPLETENESS OF SUCH INFORMATION. THE INVESTMENT RESULTS OF ANY SUCH PERSONS OR ENTITIES, FOR THESE REASONS, THERE ARE LIMITATIONS ON THE VALUE OF THE HYPOTHETICAL ILLUSTRATIONS CONTAINED HEREIN. THIS SUMMARY IS PROVIDED TO YOU ON THE UNDERSTANDING THAT AS A SOPHISTICATED INVESTOR, YOU WILL UNDERSTAND AND ACCEPT ITS INHERENT LIMITATIONS, WILL NOT RELY ON IT IN MAKING ANY INVESTMENT DECISION WITH RESPECT TO ANY SECURITIES THAT MAY BE ISSUED, AND WILL USE IT ONLY FOR THE PURPOSE OF DISCUSSING WITH MERRILL LYNCH YOUR PRELIMINARY INTEREST IN INVESTING IN A TRANSACTION OF THE TYPE DESCRIBED HEREIN. YOU SHOULD CONDUCT YOUR OWN INVESTIGATION AND ANALYSIS OF THE FINANCIAL SERVICES AND MARKETS RELATING TO THE FINANCIAL PROMOTION ORDER 2001 (THE "ORDER"), (B) HIGH NET WORTH ENTITIES, AND OTHER PERSONS TO WHOM IT MAY OTHERWISE LAWFULLY BE COMMUNICATED, FALLING WITHIN ARTICLE 48(2)(A)(D) OF THE ORDER OR (C) ANY CLIENT OF MERRILL LYNCH INTERNATIONAL BANK LIMITED (OR ANY UK AFFILIATE) WHO ARE EITHER AN "INTERMEDIATE CUSTOMER" OR "MARKET COUNTERPARTY" FOR THE PURPOSES OF THE FSA HANDBOOK. ALL SUCH PERSONS TOGETHER BEING REFERRED TO AS "RELEVANT PERSONS". IN ADDITION TO BEING A CUSTOMER, AN INVESTOR MUST ALSO HAVE AT LEAST 100,000 EURO (OR EQUIVALENT) NET INVESTMENTS. THIS DOCUMENT MUST NOT BE ACTED ON OR RELIED ON BY PERSONS WHO ARE NOT RELEVANT PERSONS. ANY INVESTMENT OR INVESTMENT ACTIVITY TO WHICH THIS DOCUMENT RELATES IS ONLY AVAILABLE TO RELEVANT PERSONS.

INVESTING IN COLLATERALIZED DEBT OBLIGATIONS INVOLVES RISKS THAT ARE MORE FULLY DESCRIBED IN THE OFFERING CIRCULAR.